



JAPANESE KOI

Garden Party

MAY 31, 2025


HOSTED BY BRUCE AND SUSAN HEIM

SPONSORSHIP OPPORTUNITIES



STRAWBERRY FIELDS
INCORPORATED

AN AFFILIATE OF
Devereux
ADVANCED BEHAVIORAL HEALTH

The background of the page features a soft-focus image of cherry blossoms in shades of pink and white against a clear blue sky. In the lower-left corner, a portion of a traditional Japanese building with a red facade and a dark, ornate roof is visible. The overall aesthetic is serene and celebratory.

Dear Friend,

As you know, I believe Strawberry Fields is the premier local charity doing outstanding work in our community. For more than half a century, they have been dedicated to empowering individuals and enriching lives.

I've attached the giving levels for sponsorship of this year's Summer Garden Party on Saturday, May 31, 2025. There's no better way to amplify your social capital than by supporting Strawberry Fields with a sponsorship gift.

With your sponsorship, you'll not only make a direct impact—you'll also have the opportunity to invite guests and introduce them to the vital work of Strawberry Fields. This event has become a cornerstone of support for this exceptional organization, thanks to generous friends like you.

Your gift truly matters. It strengthens our community and changes lives.

Love,

Bruce & Susan

Bruce and Susan

Japanese Koi Garden Party

SPONSORSHIP OPPORTUNITIES

Drift into a Japanese koi garden—where beauty, harmony, and giving flow as one.

感謝

Kan Sha \$10,000

Prominent recognition on all event materials (website and invitations)
Prominent recognition on signage throughout the event | Verbal recognition during remarks
Logo and company name featured on Impact Story | Recognition in Strawberry Fields' Annual Report
Post-event newsletter feature | Social media spotlight
Media mention: Acknowledgment in pre and post-press releases
Good Day Café basket | Group Photo Opportunity in a designated area (optional) | 12 guests

平和

HeiWa \$7,500

Prominent recognition on all event materials (website and invitations)
Prominent recognition on signage throughout the event | Verbal recognition during remarks
Recognition in Strawberry Fields' Annual Report | Post-event newsletter feature | Social media spotlight
Media mention: Acknowledgment in pre and post-press releases
Good Day Café basket | Group Photo Opportunity in a designated area (optional) | 10 guests

力

Chikara \$5,000

Recognition on all event materials (website and invitations)
Recognition on signage throughout the event | Verbal recognition
Recognition in Strawberry Fields' Annual Report | Social media spotlight
Good Day Café basket
8 guests

勇

Kanji \$3,500

Recognition in event materials (website and invitations)
Recognition on signage throughout the event
Recognition in Strawberry Fields' Annual Report
Social media mentions
6 guests

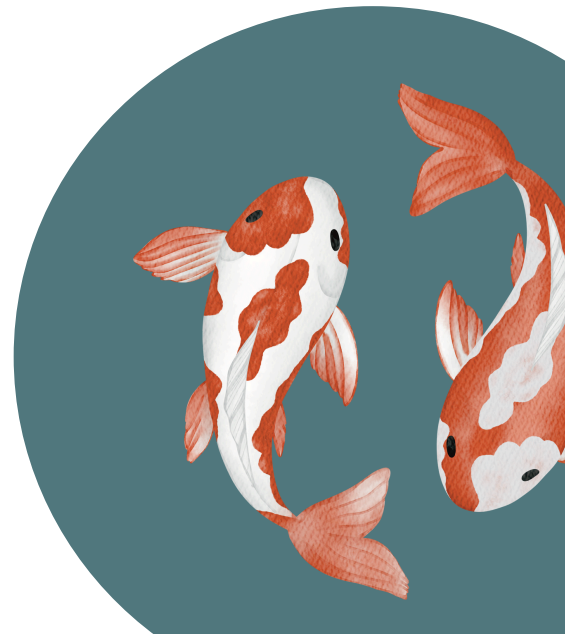
光

Hikari \$2,500

Recognition in event materials (website and invitations)
Recognition at the event
Recognition in Strawberry Fields' Annual Report
Social media mentions
4 guests

Bridge - \$1,000

Recognition on website, social media, and event signage
2 guest tickets



Poppies & Parasols:
A Parisian Promenade Inspired by Monet's Gardens
2024 Sponsors and Highlights



Hermès - \$10,000

Bruce and Susan Heim
Joe and Sue Rogacs
Strawberry Fields Board of Directors

Saint Laurent - \$5,000

Galen and Nancy Dreibelbis
Lance and Ellen Shaner
Mount Nittany Health
Powers Health Center



Dior - \$3,500

Centre 1st Bank - Jack & Karen Infield
Hartman Group
Jens and Rebecca Thorsen
John and Lisa Dimakopoulos
Laura Mosier and George McMurtry
Phil Vollmer and Andrea Dowhower
Sage Life Technologies



Givenchy - \$2,500

Al and Jodi Pringle
America's Carpet Outlet
Blake and Linda Gall
Bob and Sandy Poole
Charlene Friedman
Dan and Suzie Hawbaker
Dean and Suzie Johnson
First National Bank
Frost & Conn Insurance
Joel and Mariya Myers
John and Carol Kelly
Kish Bank
Mariner Wealth
Matt and Tiffany Stuckey
Quality Hardwoods
Richard and Martha Supina
Roy and Cindy Love
The Pasquinelli Family
Tom and Sara Songer
Wells Fargo Advisors
H.W. Constantin Nelson, CFA First Vice President - Investments

